

⑤ Site Plan (by Pinetrees)

LHIB Plan

① Fuji CE4200 (2019)
• 7 bathrooms (25 people max.)

② Fuji CE6000 (2019)
• 13 bathrooms (30 people max.)

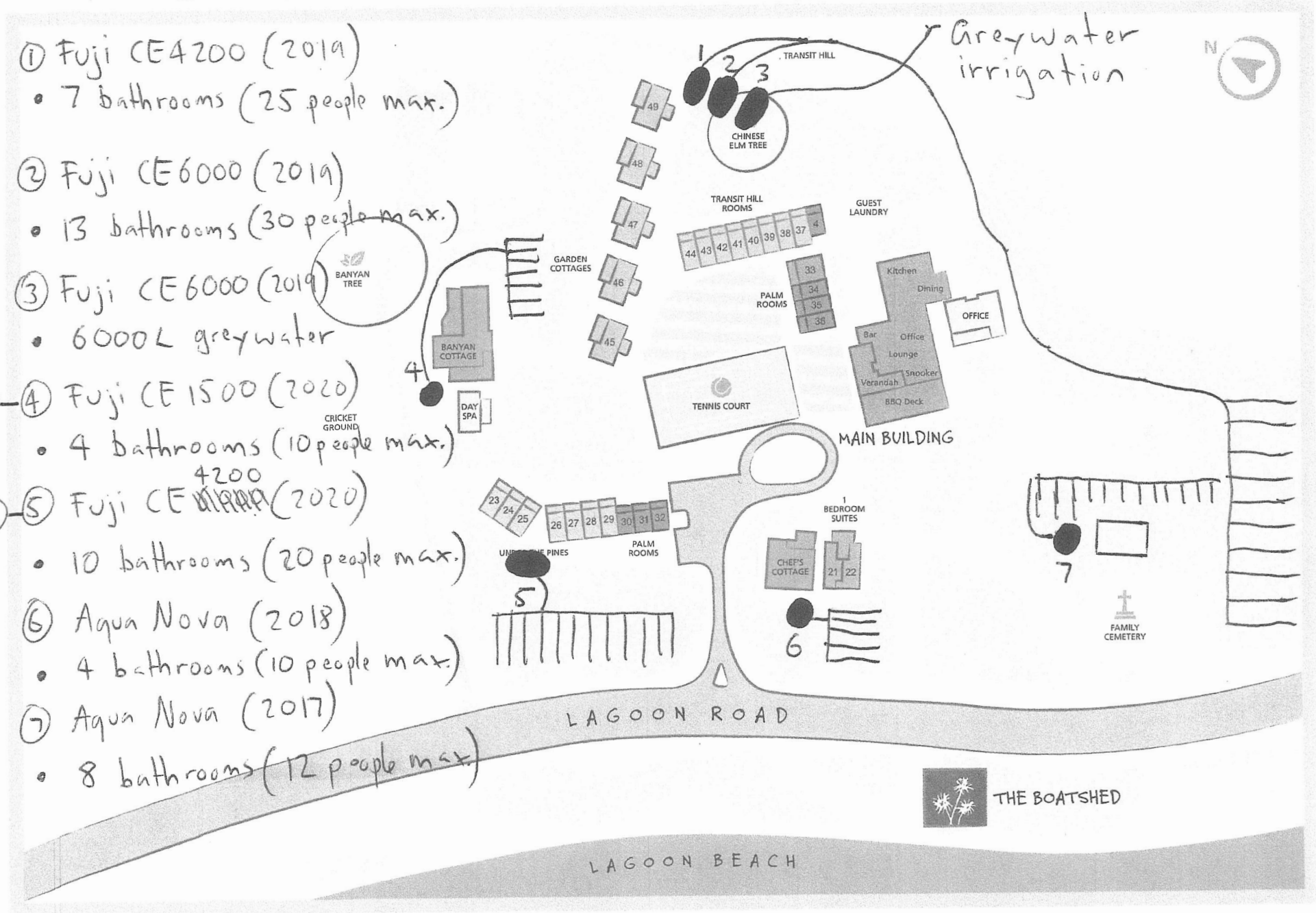
③ Fuji CE6000 (2019)
• 6000L greywater

③-④ Fuji CE1500 (2020)
• 4 bathrooms (10 people max.)

④-⑤ Fuji CE ~~4200~~ (2020)
• 10 bathrooms (20 people max.)

⑥ Aqua Nova (2018)
• 4 bathrooms (10 people max.)

⑦ Aqua Nova (2017)
• 8 bathrooms (12 people max.)



Site Plan by LHI B

Pinetrees Wastewater Site Plan

3

4



	Pinetrees Wastewater Site Plan Legend
	Pinetrees Wastewater Building
	Pinetrees Wastewater Parking
	Pinetrees Wastewater Road
	Pinetrees Wastewater Pond
	Pinetrees Wastewater Stormwater
	Pinetrees Wastewater Utility
	Pinetrees Wastewater Fencing
	Pinetrees Wastewater Signage
	Pinetrees Wastewater Landscaping
	Pinetrees Wastewater Site Boundary
	Pinetrees Wastewater Utility Pole
	Pinetrees Wastewater Stormwater Inlet
	Pinetrees Wastewater Stormwater Manhole
	Pinetrees Wastewater Stormwater Catchment
	Pinetrees Wastewater Stormwater Pond
	Pinetrees Wastewater Stormwater Treatment
	Pinetrees Wastewater Stormwater Storage
	Pinetrees Wastewater Stormwater Discharge
	Pinetrees Wastewater Stormwater Inlet
	Pinetrees Wastewater Stormwater Manhole
	Pinetrees Wastewater Stormwater Catchment
	Pinetrees Wastewater Stormwater Pond
	Pinetrees Wastewater Stormwater Treatment
	Pinetrees Wastewater Stormwater Storage
	Pinetrees Wastewater Stormwater Discharge

Pinetrees Wastewater

Copyright Department of Environmental and Climate Change 2019. May 2019
This map is not guaranteed to be 100% accurate or complete.
The Department of Environmental and Climate Change 2019 and its employees
accept liability for any and all damage for reliance on the
map and any consequences of such use as contained.

North Arrow

0 0 0 0 0 Meters

Printed By
KIM Engineers
26 May 2019
Customer: 2019-05-26-01

Note: All measurements shown are the area of available land suitable for each Effluent Land Application Area. The areas take into account site constraints such as buffer distances from buildings. Areas indicated will be \geq the required LAA for each system.

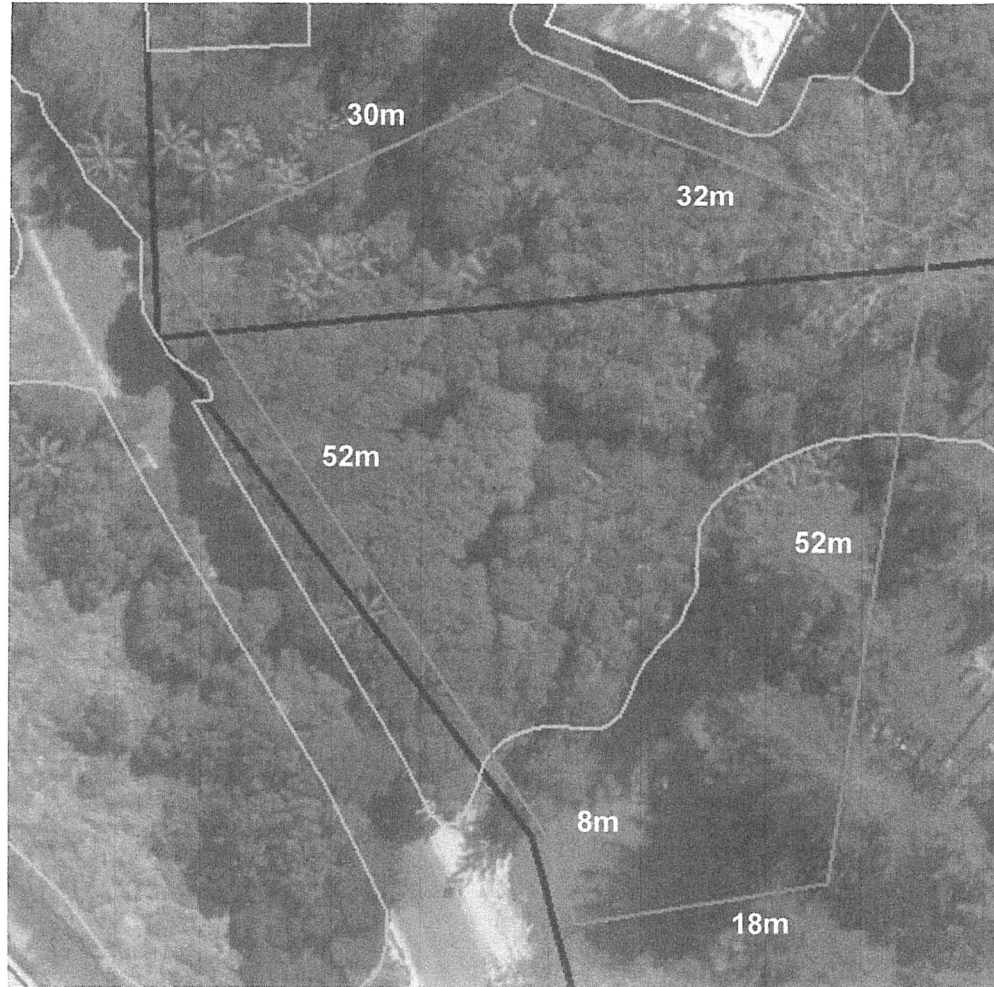
Pinetrees W/W System 1 - LAA

Required: 2242m²

Potential for:

5 x zones of 450m² = 2250m²

Max. zone size 450m²



Supporting Information

⑦ Irrigation Areas

Pinetrees W/W System 2 - LAA

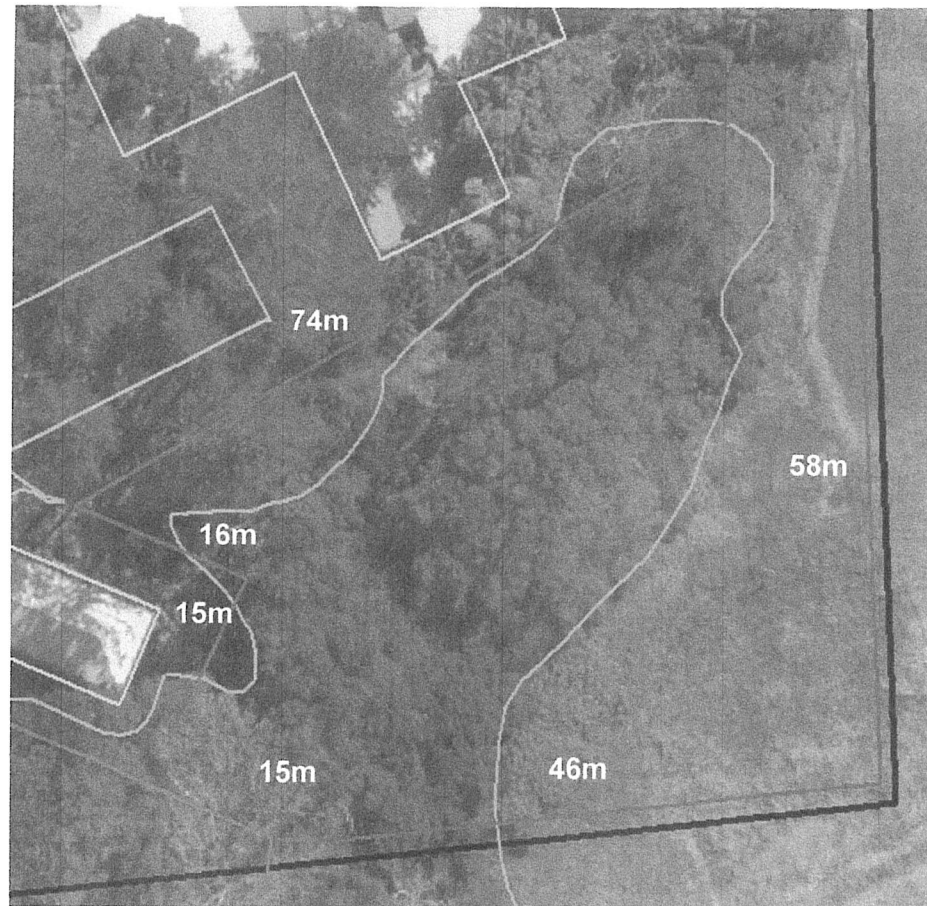
Required: 2415m²

Potential for:
6 zones @ 403m² = 2418m²

Max zone size 403m²

For greywater effluent

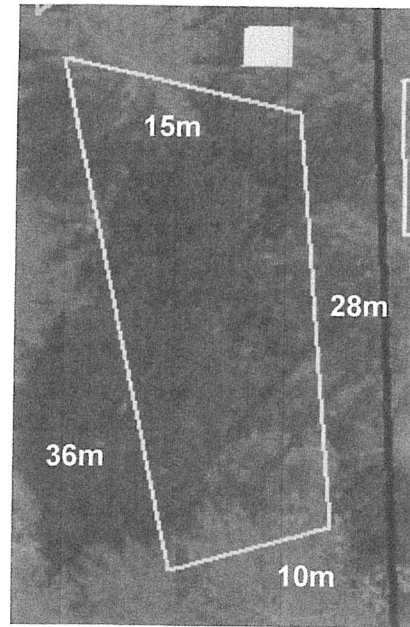
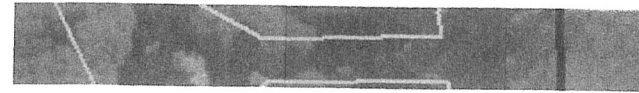
This LAA is based on worst case scenario. Effluent analysis may reveal smaller zone required



Pinetrees W/W System 5 - LAA

Required: 362m²

1 x zone of 362m² only



Pinetrees W/W System 6 - LAA

Required: 338m²

1 x zone of 338m² only

