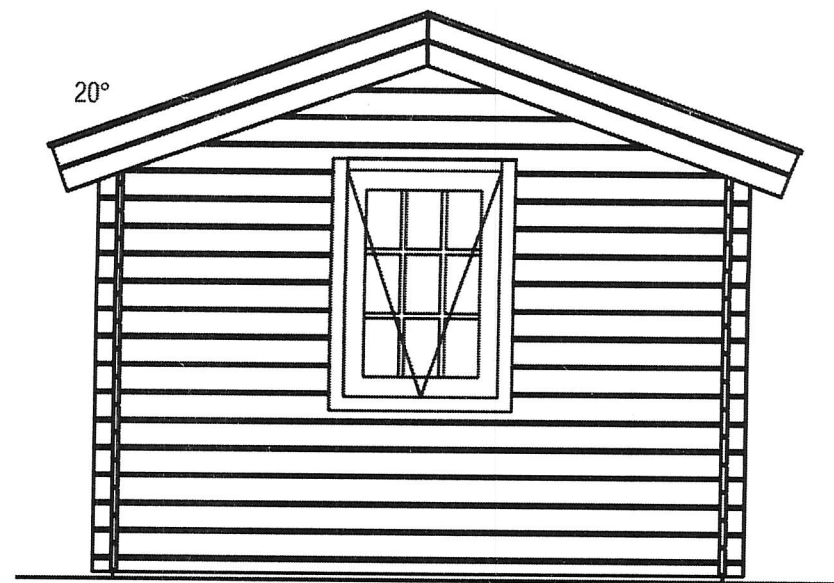
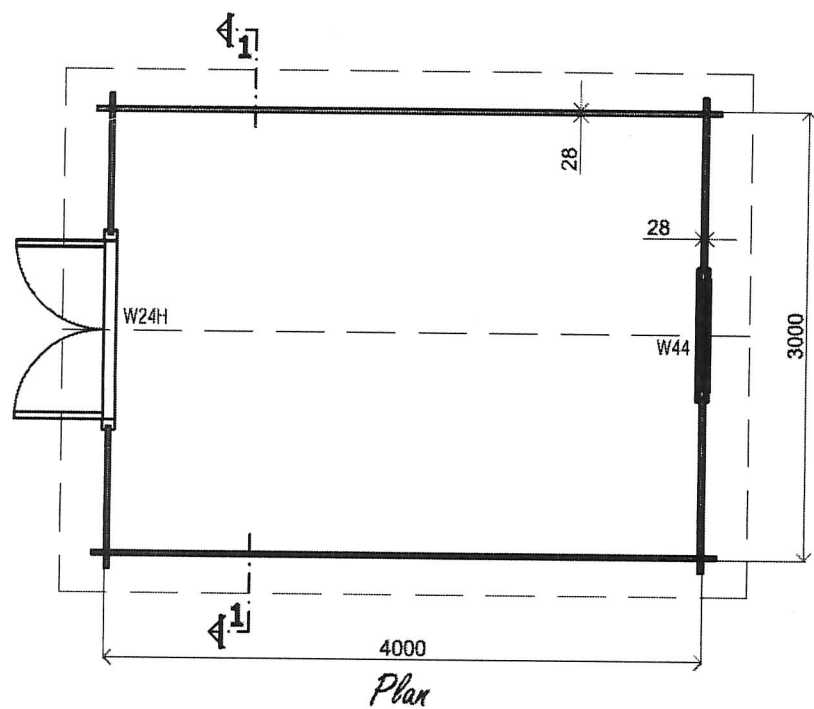


*Front view*

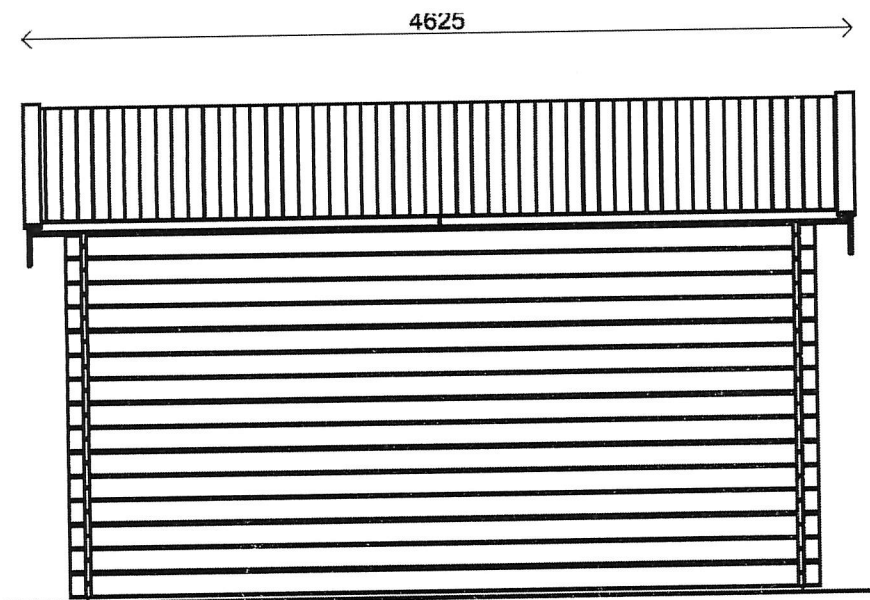


*(R) Side view*

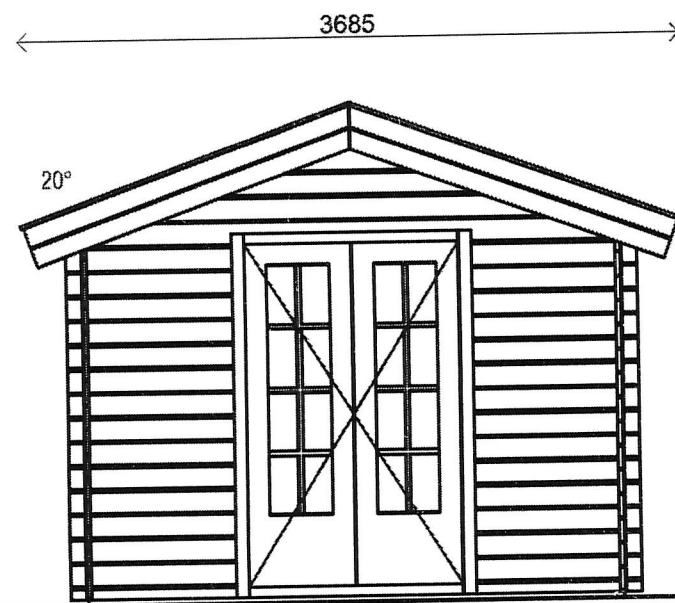


Description:  
400x300cm

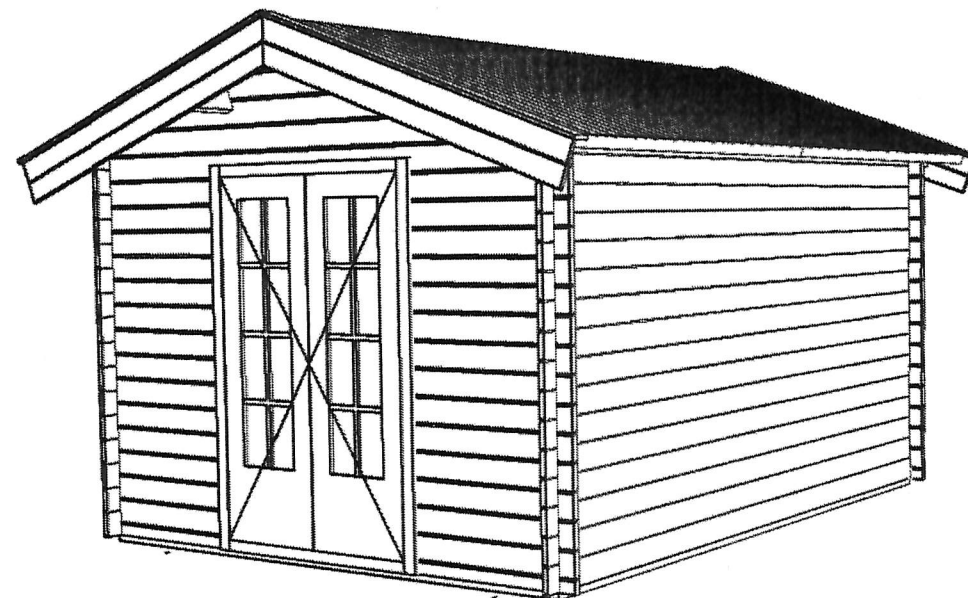
Component:  
Plan + Elevation



*Rear view*



*(L) Side view*



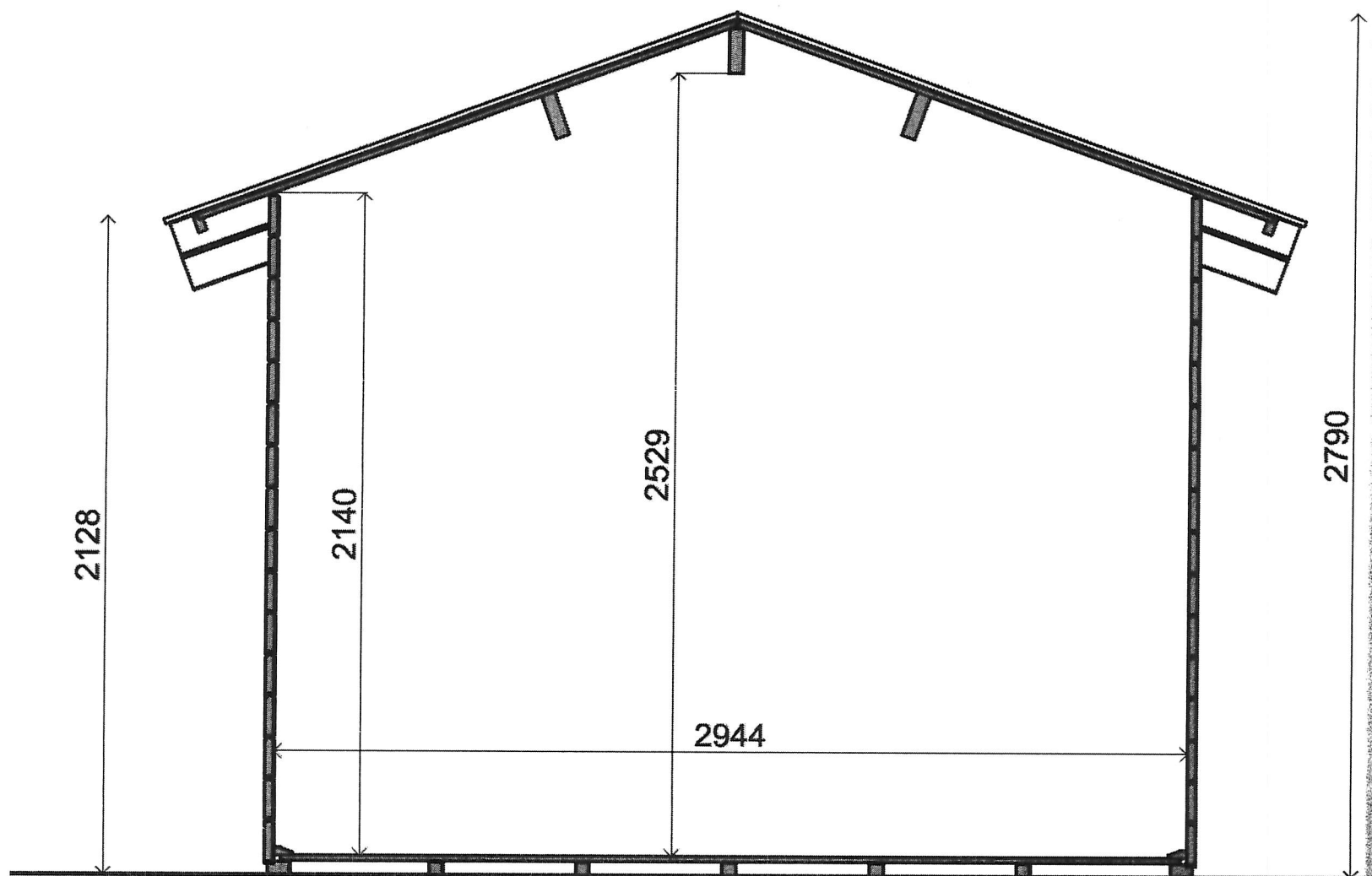
Description:  
400x300cm

Component:  
Plan + Elevation

**FORT GROUP**

Description:  
400x300cm

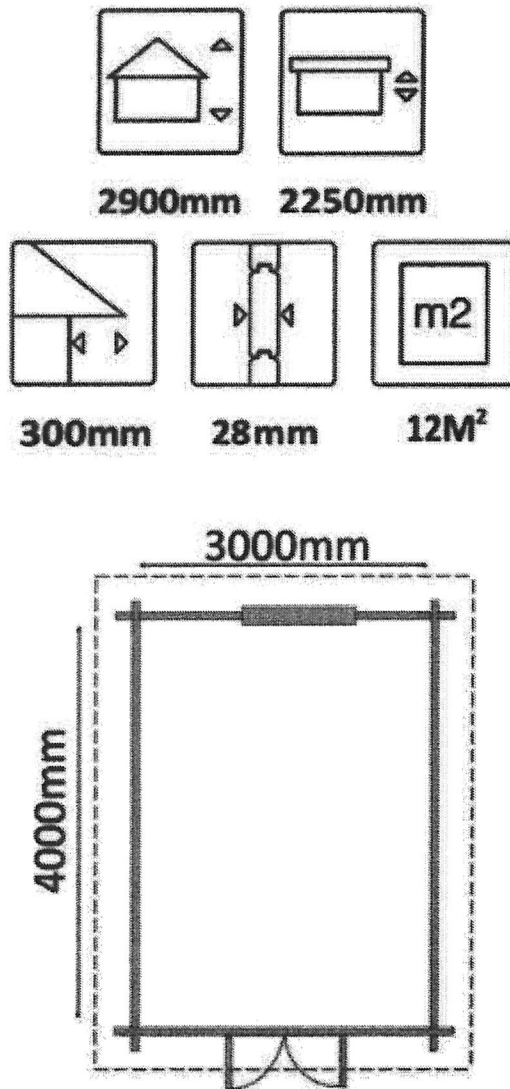
Component:  
Section



*Section*

**FORT GROUP**

# Your Cabin Information



Width: 3000mm (3m)

Depth: 4000mm (4m)

Total Height: 2900mm

Wall Height: 2250mm

Wall Thickness: 28mm

Floor Thickness: 19mm

Roof Thickness: 19mm

Roof Material: Water Proof Asphalt Shingle – Ancient Black

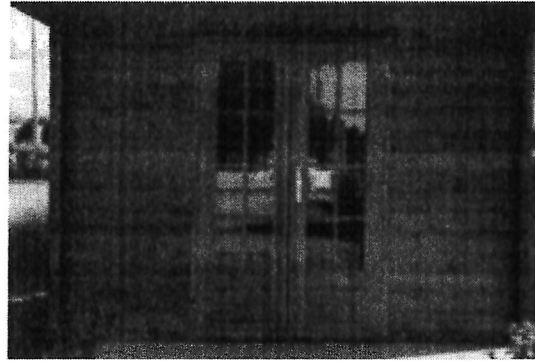
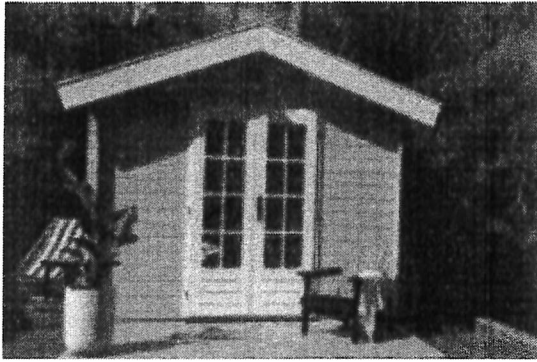
The wood is kiln dried Nordic Spruce.

The Cabana Cabin has been treated with a non-toxic pressure treatment. Pressure treated timber does not need to be painted and you have the peace of mind knowing that it is termite resistant. Our Pressure Treatment innovation gives the wood an optimal lifespan whilst retaining the excellent natural properties of the traditional wood benefits.

[Read more about our pressure treatment.](#)



## Your Kitset Inclusions



The Cabana Cabin comes as a complete kitset with everything you need to build it including:

- All pressure treated timber for floors, walls, roof
- 1 x double glazed French style door with keys
- 1 x double glazed window
- Asphalt roof tiles
- Component bag with nails, screws, sealant
- Floor joists
- Comprehensive step by step written instructions
- Full Build Video Instructions
- Phone & Email support during your build

